



FRIDAY 17TH APRIL 2026

Welcome back!



Dear families,

Welcome back to the Summer Term – it has been lovely to see the children return to school with such enthusiasm. This term promises lots of exciting learning experiences and opportunities for the children to be involved in, both in and beyond the classroom.

A key focus for this term is transition. We know how important this is for our children and young people, whether they are new to school, moving up a year group, or preparing for the next stage of their education. Over the coming weeks, staff will be planning a range of activities to support these transitions carefully and positively, ensuring every child feels secure, confident and that they belong to Blofield Primary School.

You will have seen our recent communications regarding the condition of the school field. We know how disappointing this has been for the children and appreciate your understanding; please be assured we are doing everything possible on their behalf. In the meantime, we have been working hard to ensure playtimes remain engaging and enjoyable. This week we introduced new playtime boxes and music, and it was a real joy to see children dancing, singing, and inventing their own games together.



We hope your child has had a happy return to school and we look forward to sharing more news and celebrations with you as the term unfolds. We wish you a very lovely weekend.

PARKING IN THE STAFF CAR PARK



Thank you to the many parents and carers who respect our request not to use the staff and visitor car park at drop-off and pick-up times. Your cooperation helps keep everyone safe.

We know it can be tempting, particularly when the gate is open, but we kindly remind families that the car park is not for parent parking. This entrance is used by many families on foot, especially those with children in Reception and Year 1, and we would not want a child to be put at risk by vehicles using the space when they shouldn't be.

Respecting this decision is an important part of looking after our whole school community—just as we encourage our children to respect boundaries and rules too.

Thank you, as always, for your understanding and continued support.



ATTENDANCE



This week's overall attendance 96.37%
Well done to Year 1 for 1000% attendance this week

Please be aware that class teachers have their team meetings on Thursdays after school. If you would like to speak to your child's teacher, please avoid using Thursdays after school.

Class emails and Tapestry are checked daily outside of teaching hours so please use these to contact staff. If your request is urgent, please contact the office.

WELL DONE!



Over the Easter holidays Tilly competed at the National Gymnastics Association Easter EGGstravaganza Competition which took place in Pitstone, Hemel Hempstead.

The competition was tough but she showed fantastic determination and resilience and was thrilled to secure a Bronze medal with a great beam routine. She had so much fun and was very proud of what she achieved



If you have any outside achievements we can shout out about, please let us know.

MUSICIANS VISITING CARE HOME

On the last Friday of the Spring term a group of musicians visited Manor Lodge Care home to entertain the residents. They played a mixed of instruments, toot's (Olivia, Molly and Harry), dood (Lily), flute (Nancy) and ukuleles (Milo, Thea and Milly). The residents really enjoyed the music, singing along with 'Let it Be' by The Beatles and clapping and cheering the musicians.



It was a lovely afternoon for everyone with a special treat of a fruit platter, homemade lemonade and lots of sweets for the children. Thank you to Jane Holland and Miss Hall for accompanying us.

INFORMATION ABOUT SCHOOL

Please check our Class webpages on the school website for the latest information about what your child is learning and how you can best support them at home.

[Blofield Primary School - Class Pages](#)

For children in Reception and Year 1, please continue to look at Tapestry too.





CONT...



DATES FOR YOUR DIARY

Please keep checking as we add more dates.



Thursday 16th April

Reception 2026 Offer day for School Places



Wednesday 22nd April

PTA AGM 6:00pm at School

Thursday 30th April

Year 5 to Strangers Hall



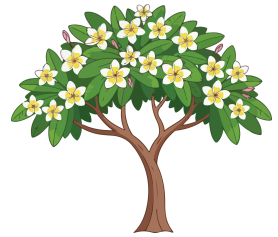
Monday 11th to
Thursday 14th May

Year 6 Statutory Assessment Week

Monday 18th May

Class Photographs

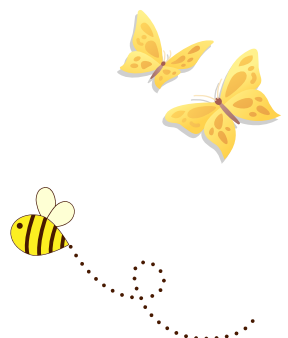
HALF TERM: MONDAY 25TH MAY TILL FRIDAY 29TH MAY



Saturday 27th June

PTA Summer Fete at Blofield Primary School

**SUMMER HOLIDAYS START FROM MONDAY 21ST JULY TO WEDNESDAY 2ND SEPTEMBER.
CHILDREN RETURN TO SCHOOL ON THURSDAY 3RD SEPTEMBER**



OPAL OUTDOOR PLAY

AND LEARNING OPAL



We already know that OPAL brings out the best in us all but Jess in year 6 needs an especially huge thank you! One of our new teddies was broken last week and she offered to take him home and perform some teddy surgery. Jess is a proficient seamstress and has repaired Barny to his good old self.

Thank You So Much!

We welcomed a donation of a beautiful, classic chest of drawers to our outdoor storage from some kind neighbours. Now home to our small world toys!



Pick your perfect plushie pal!

Thank you everyone who has helped take care of our new equipment



Reminder

Uniform Expectations

We have noticed that a number of children are not coming to school in the correct uniform, particularly on PE days. We'd like to kindly remind families of our expectations so that we can maintain a consistent and smart appearance across the school.

Children may come to school wearing their PE kit on their PE day or when attending an after-school sports club. However, it is important that the correct PE kit is worn. Branded sportswear, football kits, or alternative sports clothing should not be worn in place of school PE uniform.

We are especially seeing this issue in the older year groups, and we would really appreciate your support in helping us reinforce these expectations.

Thank you for your cooperation.



SCHOOL UNIFORM

Navy-blue crewneck sweatshirt
or navy-blue cardigan either
plain or with school logo

Navy-blue or dark grey trousers
or navy-blue skirt or navy-blue
pinafore dress

White polo shirt either plain or
with logo

Black shoes



PE KIT

Navy-blue shorts

Polo shirt in the child's House

Team colour (either plain or with
the school logo)

Trainers

Tracksuit/jogging suit/fleece
jacket in cold weather (no logos)

Drawstring PE bag - spare socks



1

Monday Tuesday Wednesday Thursday Friday

| | | | | | |
|-----------------|---|---|--|--|---|
| Hot Option 1 | Margherita Pizza with Potato Wedges (v) | Chicken in Tomato Sauce with Steamed Rice | Roast Chicken with Stuffing, Roast Potatoes and Gravy ✓ | Pork Bolognese with Pasta Twists ★ | Chicken Fillet Bites and Chips |
| Hot Option 2 | Chinese-Style Plant Balls with Steamed Rice (Ve) ✓ | Cheesy Pasta (v) | Cheese and Potato Pie with Gravy (v) | BBQ Loaded Bean Bake (v) | Garden Vegetable Goujons and Chips (v) ★ |
| Jacket Potato | Jacket Potato with Cheese, Beans or Tuna | Jacket Potato with Cheese, Beans or Tuna | Jacket Potato with Cheese, Beans or Tuna | Jacket Potato with Cheese, Beans or Tuna | Jacket Potato with Cheese, Beans or Tuna |
| Served with | Mixed Salad | Peas and Sweetcorn ★ | Carrots and Green Beans | Mixed Vegetables | Peas or Baked Beans |
| And for Pudding | Summer Berry Cupcake | Vanilla Ice Cream | Beetroot Brownie with Orange Wedges | Fruit Jelly | Lemon Shortbread with a Melon Wedge |
| Packed Lunch | Ham, Tuna or Cheese Sandwich, Salad Sticks, Orange Wedges, Summer Berry Cupcake | Ham, Tuna or Cheese Sandwich, Pizza Finger, Sultanas, Vanilla Ice Cream | Cheese and Tomato Pasta, Salad Sticks, Orange Wedges, Beetroot Brownie | Cheese and Tomato Pasta, Salad Sticks, Sultanas, Fruit Jelly | Ham, Tuna or Cheese Sandwich, Salad Sticks, Melon Wedge, Lemon Shortbread |

Week One: 13 Apr | 4 May | 1 Jun | 22 Jun | 13 Jul | 14 Sep | 5 Oct — Fresh Fruit Available Daily



2

Monday Tuesday Wednesday Thursday Friday

| | | | | | |
|-----------------|---|--|--|--|--|
| Hot Option 1 | Margherita Pizza with Tomato Pasta (v) | Chicken Curry with Steamed Rice | Chipolata Sausages with Yorkshire Pudding, Mashed Potato and Gravy | BBQ Shredded Chicken in a Wrap with Potato Wedges ✓ | Fish Fingers or Salmon Fingers and Chips |
| Hot Option 2 | Vegetable Curry with Steamed Rice (Ve) ★ | Cheese and Tomato Pasta Bake (v) | Plant Sausages with Yorkshire Pudding, Mashed Potato and Gravy (v) ★ | Vegetarian Enchilada with Potato Wedges (v) ✓ | Cheese and Potato Pastry Pinwheel and Chips (v) |
| Jacket Potato | Jacket Potato with Cheese, Beans or Tuna | Jacket Potato with Cheese, Beans or Tuna | Jacket Potato with Cheese, Beans or Tuna | Jacket Potato with Cheese, Beans or Tuna | Jacket Potato with Cheese, Beans or Tuna |
| Served with | Sweetcorn ★ | Mixed Vegetables | Carrots and Peas | Mixed Salad | Peas or Baked Beans |
| And for Pudding | Fresh Fruit Platter | Marble Shortbread | Summer Berry and Apple Slice with Greek Yogurt ✓ | Orange Cupcake | Apple Flapjack |
| Packed Lunch | Ham, Tuna or Cheese Sandwich, Salad Sticks, Sultanas, Fruit Portion | Ham, Tuna or Cheese Sandwich, Pizza Finger, Orange Wedges, Marble Shortbread | Cheese and Tomato Pasta, Salad Sticks, Fruit Portion, Summer Berry and Apple Slice | Cheese and Tomato Pasta, Salad Sticks, Fruit Portion, Orange Cupcake | Ham, Tuna or Cheese Sandwich, Salad Sticks, Sultanas, Apple Flapjack |

Week Two: 20 Apr | 11 May | 8 Jun | 29 Jun | 31 Aug | 21 Sep | 12 Oct — Fresh Fruit Available Daily



3

Monday Tuesday Wednesday Thursday Friday

| | | | | | |
|-----------------|---|--|--|--|--|
| Hot Option 1 | Cheese and Tomato Pasta Bake (v) | Hot Dog with Potato Wedges and Tomato Dip | Roast Chicken with Stuffing, Mashed Potato and Gravy ✓ | "Build your Own" Chicken Taco with Steamed Rice | Fish Fingers and Chips |
| Hot Option 2 | Tex Mex Chilli with Steamed Rice (Ve) ✓ | Plant Sausage Hot Dog with Potato Wedges and Tomato Dip (v) ★ | Vegetable Pastry Plait with Mashed Potato and Gravy (v) | "Build your Own" Vegetarian Taco with Steamed Rice (v) | Cheese and Tomato Frittata and Chips (v) |
| Jacket Potato | Jacket Potato with Cheese, Beans or Tuna | Jacket Potato with Cheese, Beans or Tuna | Jacket Potato with Cheese, Beans or Tuna | Jacket Potato with Cheese, Beans or Tuna | Jacket Potato with Cheese, Beans or Tuna |
| Served with | Peas and Sweetcorn ★ | Mixed Salad | Broccoli and Carrots | Sweetcorn ★ | Peas or Baked Beans |
| And for Pudding | Banana Muffin | Shortbread | Apple Crumble and Greek Yogurt ✓ | Oaty Cookie | Chewy Krispie Bar with Orange Wedges |
| Packed Lunch | Ham, Tuna or Cheese Sandwich, Salad Sticks, Sultanas, Banana Muffin | Ham, Tuna or Cheese Sandwich, Salad Sticks, Sultanas, Shortbread | Cheese and Tomato Pasta, Salad Sticks, Melon Wedge, Flapjack | Cheese and Tomato Pasta, Salad Sticks, Sultanas, Oaty Cookie | Ham, Tuna or Cheese Sandwich, Salad Sticks, Orange Wedges, Chewy Krispie Bar |

Week Three: 27 Apr | 18 May | 15 Jun | 6 Jul | 7 Sep | 28 Sep | 19 Oct — Fresh Fruit Available Daily

BEGINNER

SIGN LANGUAGE



**JOIN AND LEARN AS A
PARENT/CARER
AND CHILD TOGETHER**

£25 for adult and one child.
Add a sibling for £5! (max 2 children)

**FRIDAYS APR 17TH - MAY 22ND
3.30-4PM, BLOFIELD SCHOOL**

ALL PROCEEDS WILL GO TO THE PTA



Sign up at:
[forms.cloud.microsoft/r/
ZAUFvW1SGp](https://forms.cloud.microsoft/r/ZAUFvW1SGp)



Online payment links will
be provided once a place is
confirmed



FunTime Club

FunTime Vacancies

We have limited spaces,

Please contact Karen on

office@funtime-club.co.uk

07787402187 or call in anytime to FunTime club after

3.30pm for further information and have a look round

All staff are DBS checked and hold a paediatric First aid certificate

Flexible booking

£20 annual registration per family

£12.50 per session, sibling discount if attend same session

Arts& crafts, construction, role play, outside play
socialising even homework.

If you complete registration FunTime club can be used in
emergencies or for last minute if space available

Gives you more flexibility to have some me time

We accept most childcare vouchers and the government tax
free childcare scheme, Bacs transfer

Children can attend other school activities then can come to
FunTime club after